



comune di Mara

PIANO PARTICOLAREGGIATO DEL CENTRO MATRICE

Tavola **141**

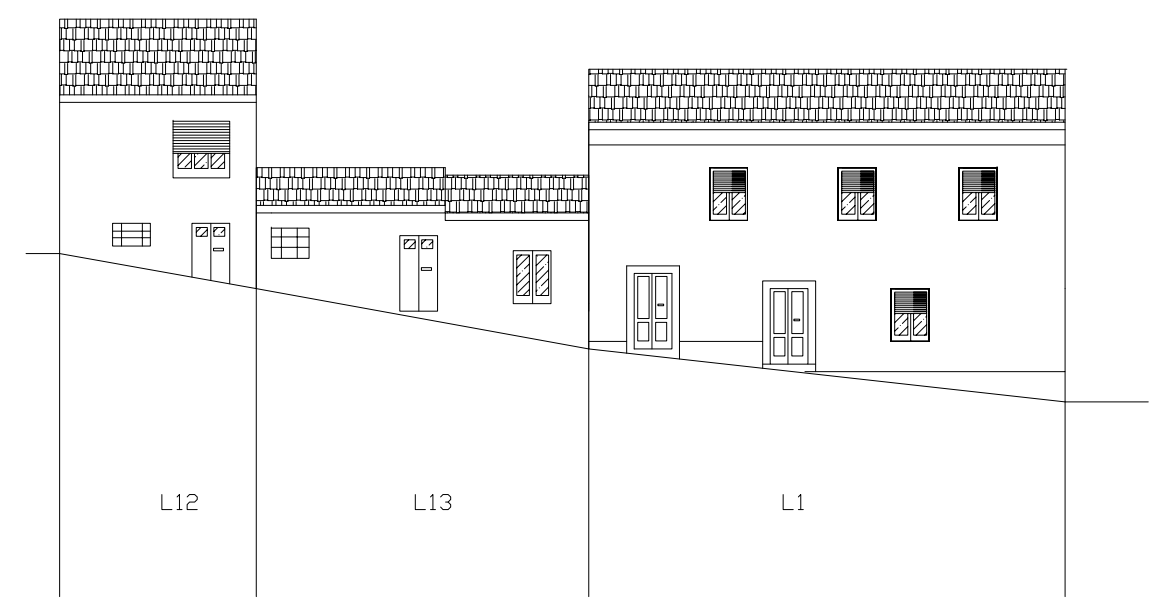
profilo regolatore: **isolato L**

sindaco
 Sig. Salvatore Ligios

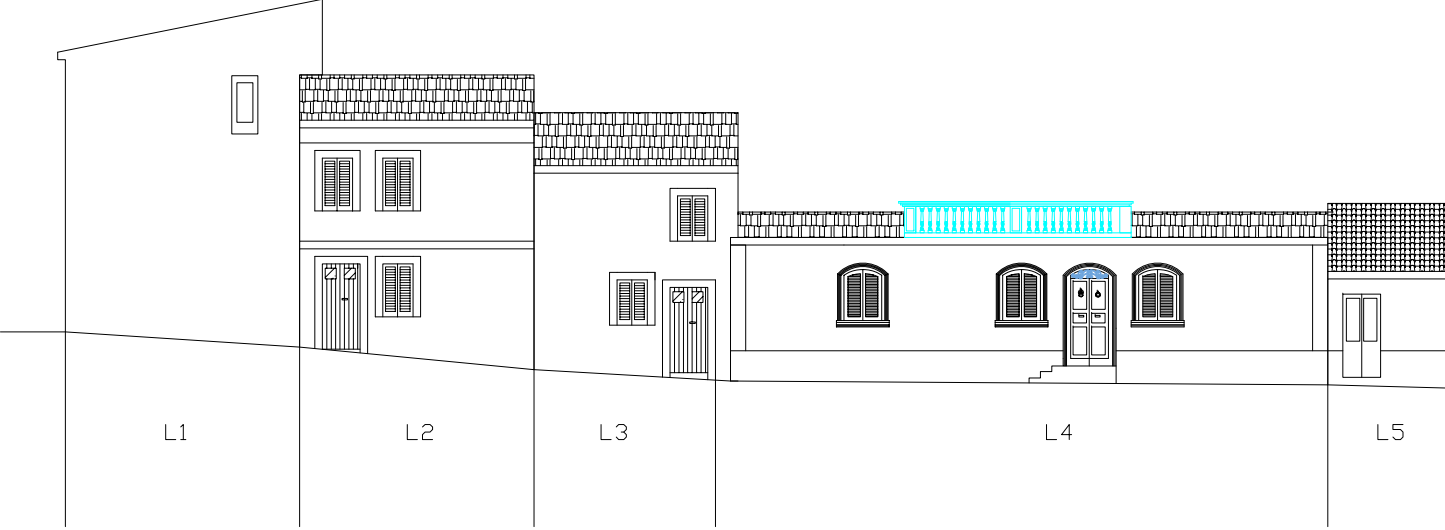
progettazione
 ing. Mauro Floris

responsabile del procedimento
 geom. Francesco Sale

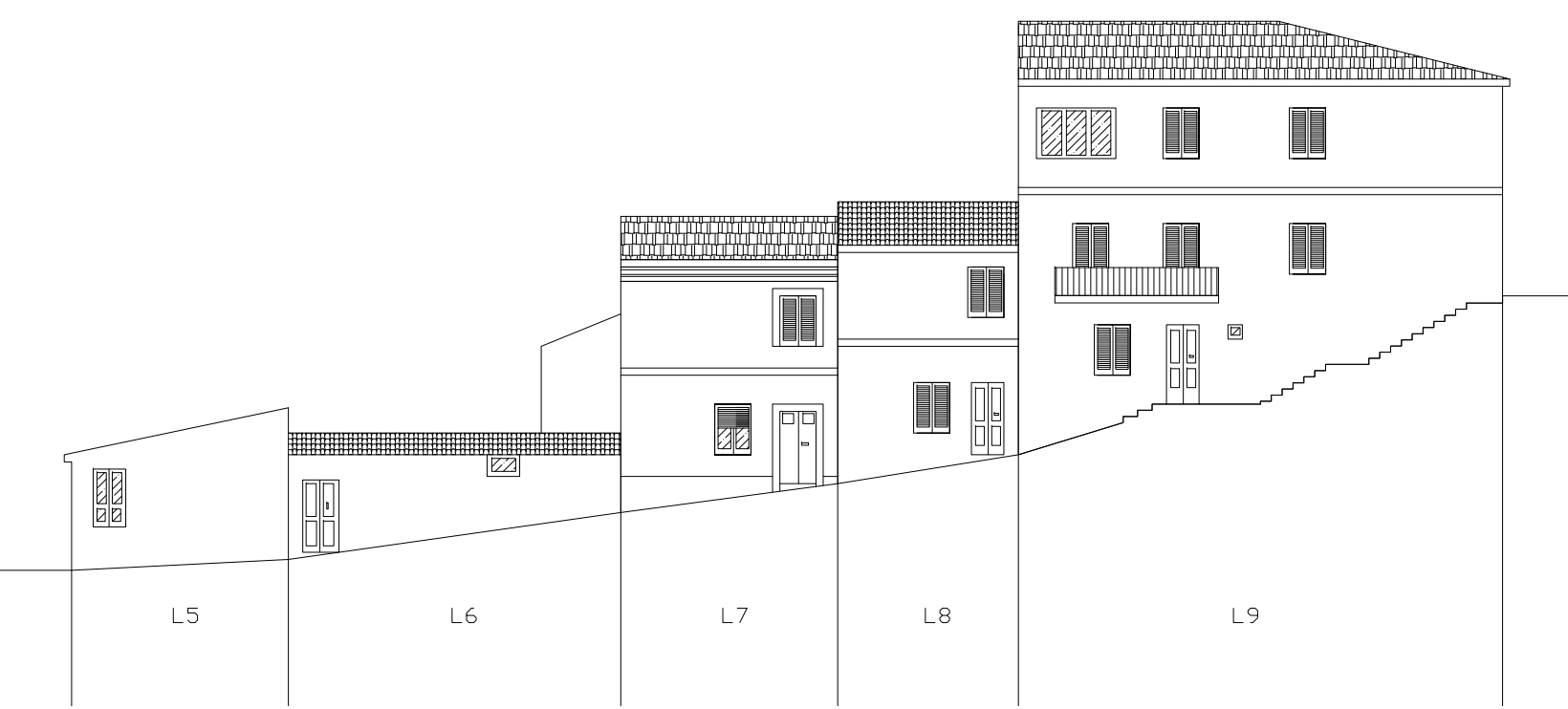
data
 maggio 2018



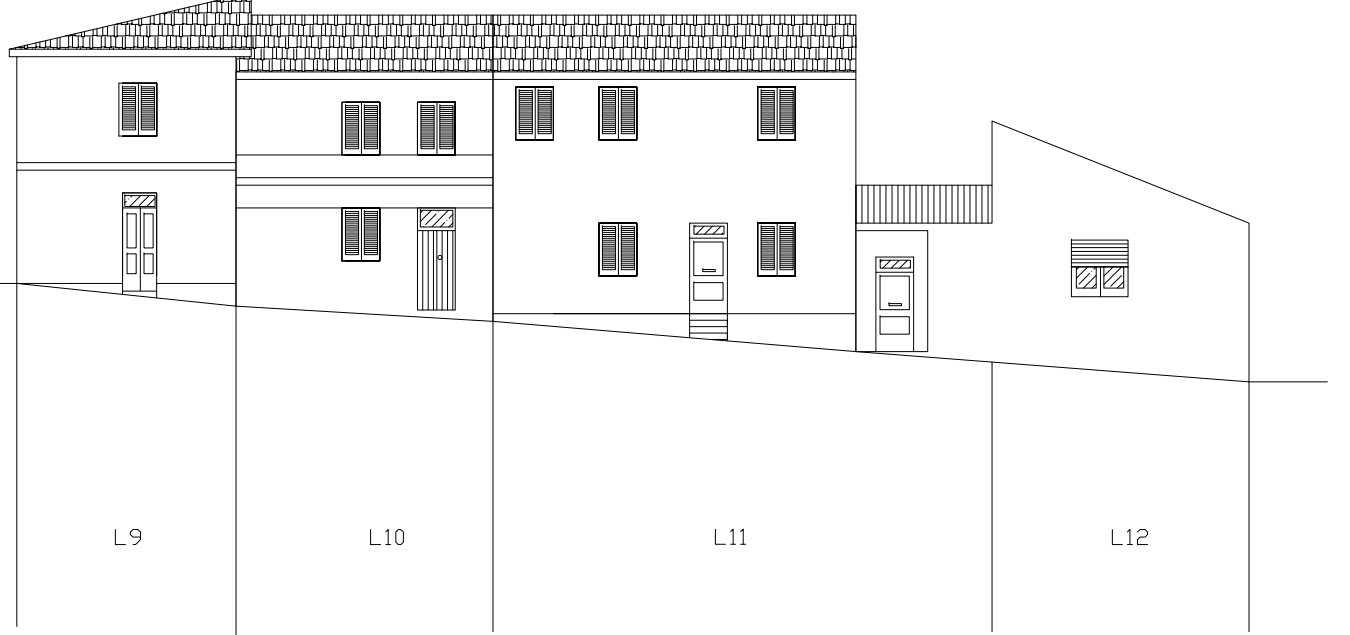
VIC. MUNICIPIO



VIA MUNICIPIO

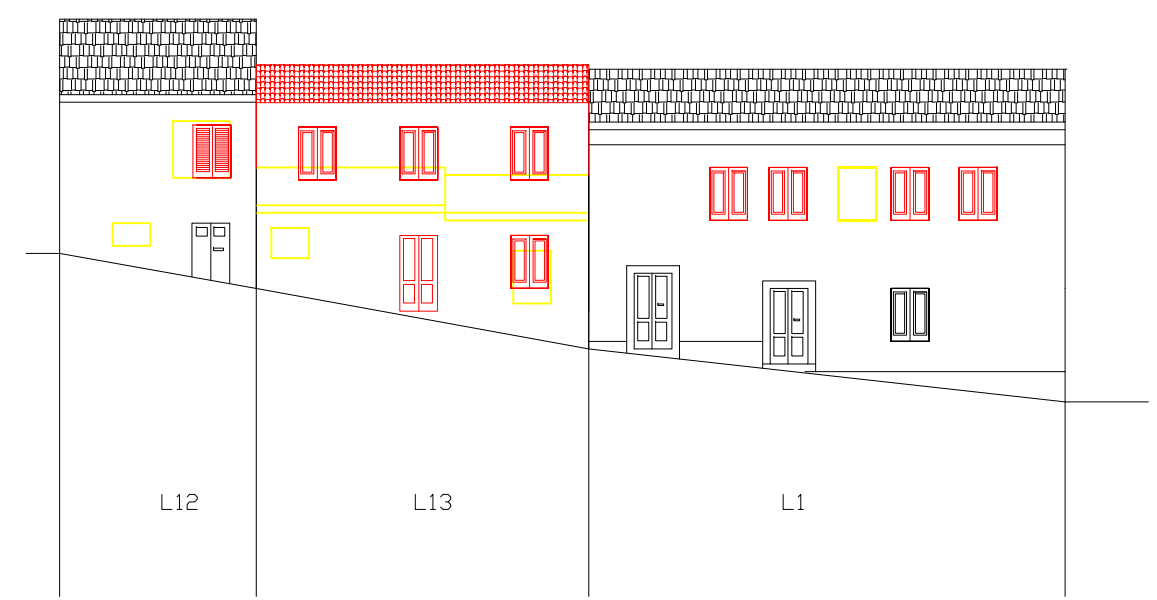


VIA GARIBALDI

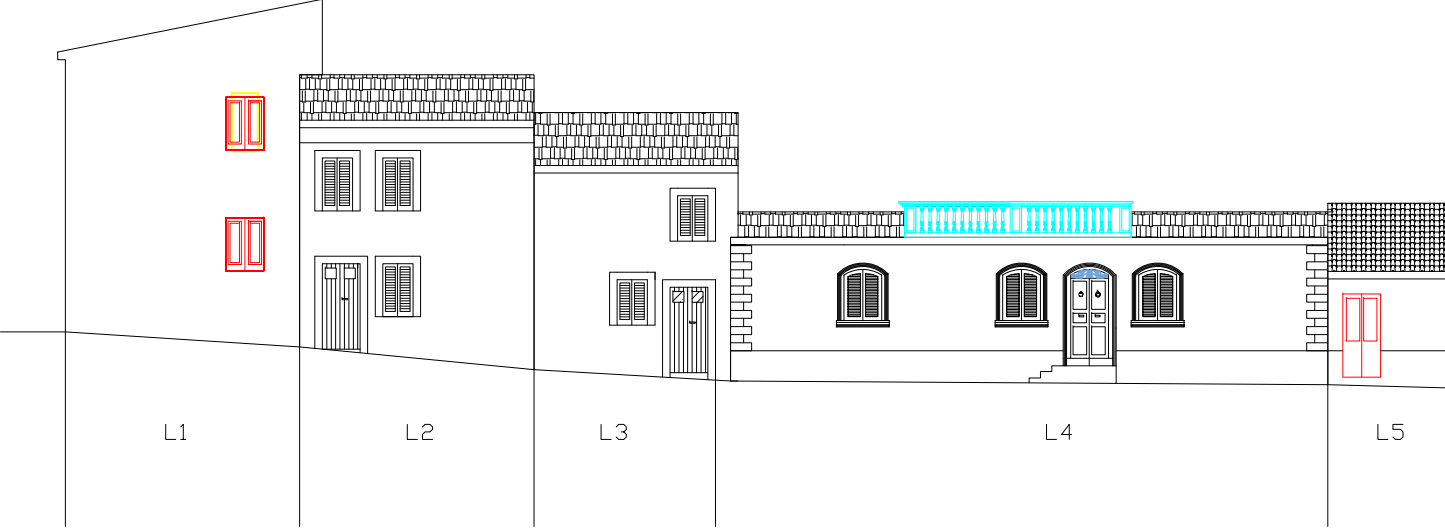


VIA ROMA

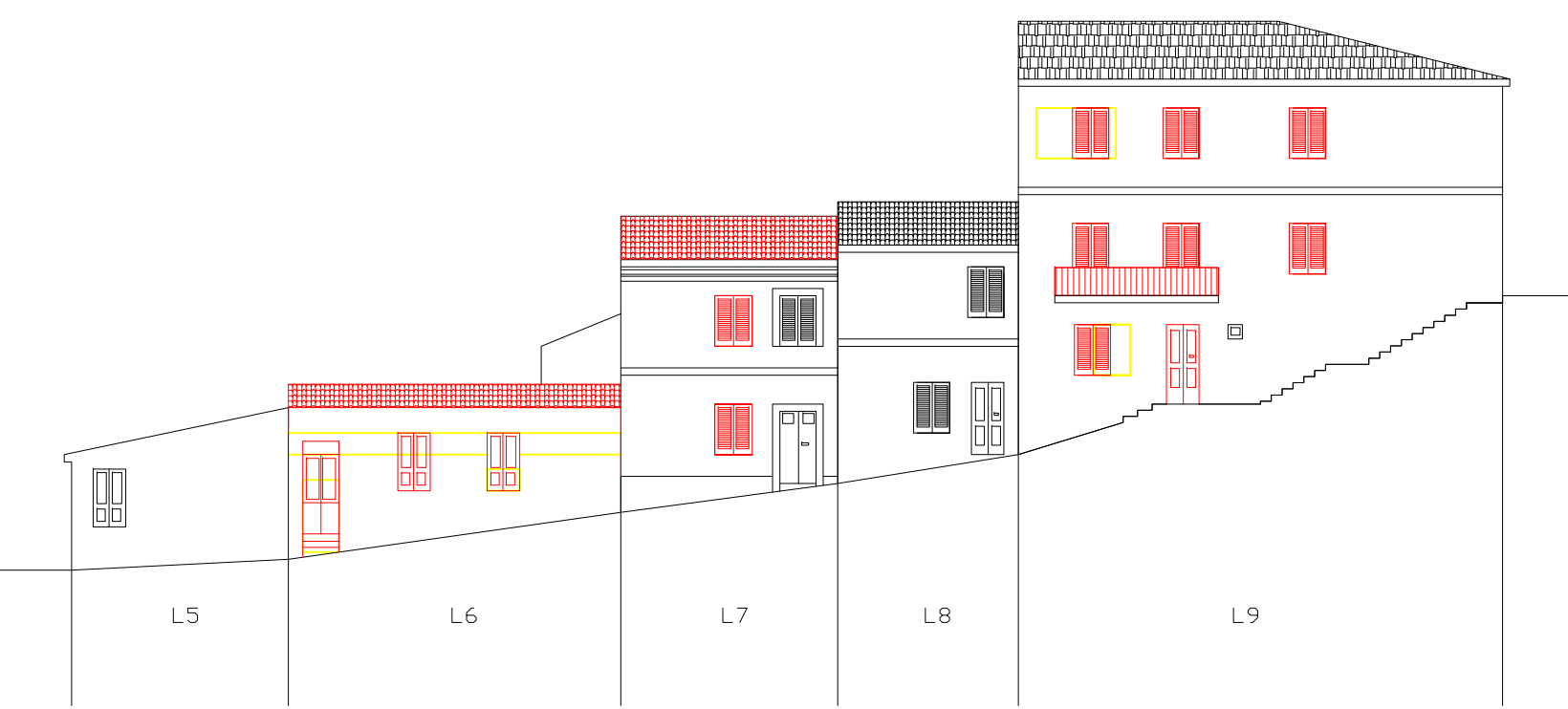
stato attuale



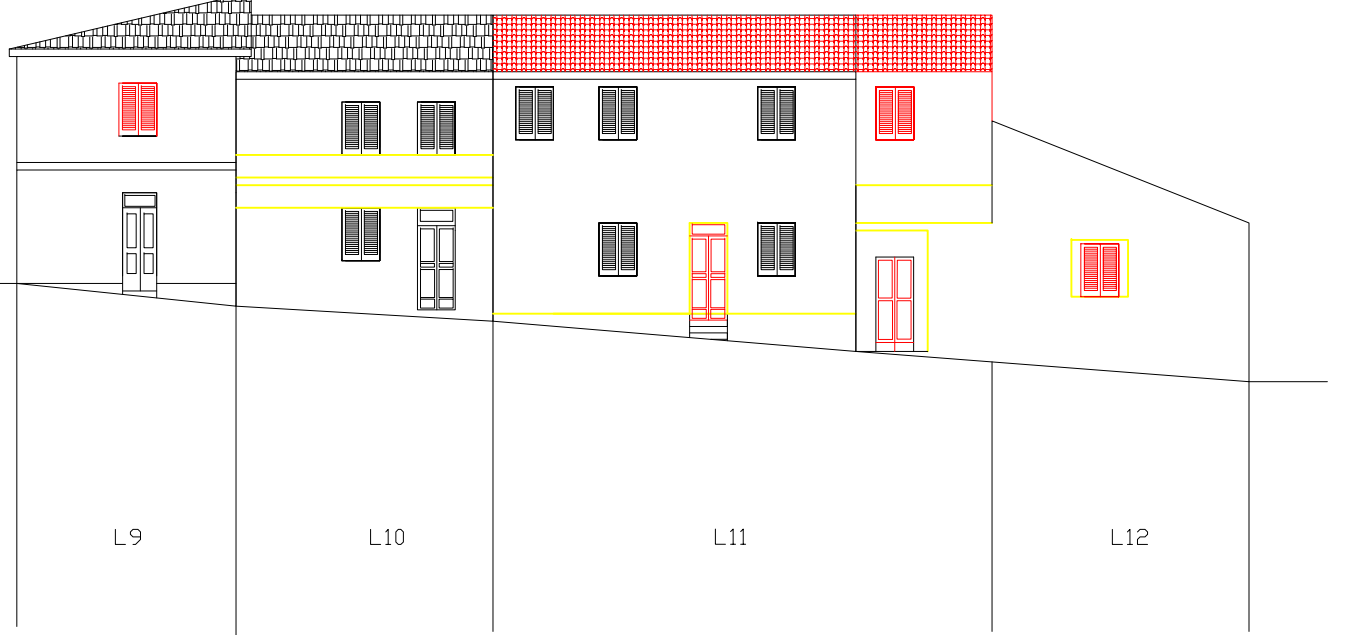
VIC. MUNICIPIO



VIA MUNICIPIO



VIA GARIBALDI



VIA ROMA

progetto